



# Oldham Coliseum Theatre

**is out  
and about  
Spring Summer 2012**

**Box Office: 0161 624 2829**  
**[www.coliseum.org.uk](http://www.coliseum.org.uk)**

**OLDHAM**  
**Coliseum**  
**THEATRE**  
**OUT AND ABOUT**

# Welcome

## By Artistic Director and Chief Executive Kevin Shaw



I am delighted to introduce our Spring and Summer season. We have a tremendous variety of plays for you to enjoy with some exciting experiences for us all as we go *Out and About*.

I am sure most of you are aware that we are temporarily closing the theatre for essential refurbishment in the Spring; however we will continue to produce high quality plays at venues that are new to the company and to some of you.

The good news for the forthcoming season is that we have decided to rollback our ticket prices, in recognition of fact that everyone is currently having to tighten their belts a little. This season you can pay the same prices as you would have paid in 2009, making your theatre trip a little easier on the pocket.

The season opens with Sir Arthur Conan Doyle's *The Hound of the Baskervilles* adapted for the stage by Clive Francis. The adaptation is a brilliant realisation of the classic novel with some tremendous twists and turns as Sherlock Holmes and Doctor Watson set out to solve another mystery. The production will be designed by theatre company IMITATING THE DOG, who specialise in video projection. These scenic effects will enable us create the wilds of Dartmoor, Baskerville Hall, Holmes's study

and, of course, the hound, with an innovative visual design. We will open the show at the Lawrence Batley Theatre in Huddersfield, a short trip 'over the tops' for those of you with cars; and for those of you without we are organising coaches to take you to Huddersfield from the Coliseum.

We follow *The Hound of the Baskervilles* with a run of plays at the Grange Arts Centre, for venue details see page 21.

First up is the return of LipService with *Move Over Moriarty*, a wildly comic production from the company that brought us *Desperate to be Doris* and *Withering Looks*. Following this we will take advantage of being based at the Grange Arts Centre by co-producing *Alfie* with the Stephen Joseph Theatre, the New Vic Theatre and the Octagon Theatre, all of which are theatres with in-the-round auditoria. *Alfie* is the most famous work of Bill Naughton - it's a great story set in the swinging 60s, and I'm sure many of you will remember the iconic film starring Michael Caine.

The last production at the Grange Arts Centre is *Dumb Show* - a furiously funny exposé of celebrity culture and tabloid journalism by multi-award winning writer Joe Penhall.

## ***“I look forward to welcoming you to a performance in one of our new venues.”***

The final play of the season is an exciting new departure for the Coliseum, with the production of a brand new play by Ian Kershaw. ***Star-Cross'd*** is a modern day Oldham based version of *Romeo and Juliet* with a twist. It will be performed in the open air at different locations in Alexandra Park during the balmy summer evenings that we have every year in Oldham. We are teaming up with Oldham Theatre Workshop, dance companies and a brass band (or two) in what promises to be the must see event of the year.

The Education & Outreach work will continue at different locations throughout the borough with our regular participatory activity taking place at new venues, see pages 16-20.

During the refurbishment the Box Office will be located in the town centre, so it will remain a convenient place to pick up your tickets, details can be found on page 24.

While we are ***Out and About*** the Coliseum Theatre will be having a makeover. Not only will we be replacing the heating and ventilation systems but we will also be re-seating the auditorium and improving the ambience of the front of house areas. This will mean that your theatre-going experience will be more comfortable, with better leg room and improved sightlines to

the stage. If you would like to contribute to our 125th Anniversary Appeal details can be found on page 27.

We will re-open the theatre in October with a spectacular production at the new and improved Coliseum which will be followed by our pantomime ***Cinderella***, tickets for which are already selling fast.

Finally, I'd like to thank you all for the support you offer the Coliseum as we enter this new chapter in the theatre's history.

I look forward to welcoming you to a performance either at the Grange Arts Centre, the Lawrence Batley Theatre, or at Alexandra Park.

With best wishes,



Kevin Shaw

Oldham Coliseum Theatre @  
Lawrence Batley Theatre, Huddersfield

An Oldham Coliseum Theatre and IMITATING THE DOG Production,  
in association with the Lawrence Batley Theatre, Huddersfield



12 – 17 March 2012

---

## A bloodcurdling howl is heard across a cold, moonlit moor; the spectral hound has claimed another victim

Sir Hugo Baskerville was the picture of aristocratic excess, drunkenness and debauchery until he was struck down by a demonic hound sent to punish his wickedness – or so the legend tells. Two hundred years later his descendant Sir Charles apparently meets a similar fate, dying of fright in the grounds of Baskerville Hall. Can Sherlock Holmes and Doctor Watson solve the mystery of *The Hound of the Baskervilles* before Sir Charles's heir comes to an equally gruesome end?

*The Hound of the Baskervilles* is one of the greatest stories of the 20th century and its macabre appeal has made it the most popular of the Sherlock Holmes adventures.

Oldham Coliseum and innovative visual design team IMITATING THE DOG collaborate to fuse different theatrical traditions including video and projection to create the dark and sinister world of the famous Baker Street detective.

Following its opening in Huddersfield *The Hound of the Baskervilles* will embark on a ten week tour, taking the Coliseum brand all over the country.

Tickets: £6.00 - £16.00



Audio Described performance:  
16 March 2012 at 7.30pm



Sign Interpreted performance:  
14 March 2012 at 7.30pm



Box Office: 0161 624 2829  
[www.coliseum.org.uk](http://www.coliseum.org.uk)



This production will take place at the  
Lawrence Batley Theatre, Huddersfield.  
For more information go to page 22.

Coach travel  
is available  
see page 22



*The*  
**HOUND**  
*of the*  
**BASKERVILLES**

BY SIR ARTHUR CONAN DOYLE  
ADAPTED FOR THE STAGE BY CLIVE FRANCIS  
DIRECTED BY KEVIN SHAW  
DESIGN BY IMITATING THE DOG

Oldham Coliseum Theatre @ The Grange Arts Centre

A LipService Production

3 – 7 April 2012

---

From the creators of *Desperate to be Doris* and *Withering Looks*

When Death stalks the back stage corridors of the Strand Theatre - as night after night artistes are murdered by an invisible, malevolent hand - who better to call in to investigate than Sherlock Holmes and Doctor Watson? The brilliant, violin-playing, French-knitting master sleuth, only hindered a little by his smaller sidekick, investigates The Garibaldi Biscuit Affair.

In this murderous music hall melange, impenetrable as a London pea-souper, our intrepid duo come face to face with Death-Defying Dan and his whelk-infested Tank of Terror, the Musical Motherless Twins, Molotov the Mind Man of Minsk and lots more alliterations. Gothic horror combines with Victorian Music Hall as this extraordinary mystery unravels.

Multi-award winners Maggie Fox and Sue Ryding play an array of characters, moving effortlessly – well, almost – from frock to frock coat in their inimitable style.

*"If you are looking for an out and out spoof, LipService's Sherlockian skit, **Move Over Moriarty**, can hardly be bettered."* - The Guardian

Tickets: £5.00 - £18.50



Box Office: 0161 624 2829  
[www.coliseum.org.uk](http://www.coliseum.org.uk)



This production will take place at the Grange Arts Centre.  
For more information go to page 21.



# MOVE OVER MORIARTY

BY MAGGIE FOX AND SUE RYDING  
DIRECTED BY GWENDA HUGHES  
DESIGNED BY KATE OWENS  
MUSIC COMPOSED BY MARK VIBRANS  
LYRICS BY MALCOLM RAEBURN

Oldham Coliseum Theatre @ The Grange Arts Centre

An Oldham Coliseum Theatre; Stephen Joseph Theatre, Scarborough;  
New Vic Theatre, Newcastle-under-Lyme and Octagon Theatre Bolton Production

11 – 28 April 2012

---

“Are you settled in nicely? Right, we’ll start. My name’s...”

It’s the Swinging Sixties and no one is embracing the spirit of free love more than Alfie Elkins. He’s the working class Don Juan of the East End – the man about town with the world at his feet and a new bird every Saturday night. But all good things must come to an end and when his no-strings-attached life starts to come apart at the seams, it’s time for him to wonder ‘what’s it all about?’

*Alfie* was made world famous by Michael Caine in one of the most iconic films of the 1960s. With five Oscar nominations, it was recently voted as one of Total Film Magazine’s top 50 British films of all time.

This production will star David Ricardo-Pearce in the title role and also feature actress Vicky Binns, best known for her portrayal of Molly Dobbs in *Coronation Street*.



Tickets: £5.00 - £18.50



Audio Described performance:  
24 April 2012 at 7.30pm



Sign Interpreted performance:  
27 April 2012 at 7.30pm



Box Office: 0161 624 2829  
[www.coliseum.org.uk](http://www.coliseum.org.uk)



This production will take place at the Grange Arts Centre.  
For more information go to page 21.

# Alfie



BY BILL NAUGHTON  
DIRECTED BY DAVID THACKER  
DESIGNED BY LIS EVANS

Original Photography by Richard Gunn

An Oldham Coliseum Theatre Production

12 – 30 June 2012

---

## Blame the fame game

Barry is 'Mr Saturday Night', a television entertainer adored by the whole nation. But behind the bright lights and dazzling smile, Barry's world is crumbling around him. Soon to be divorced, with falling ratings and an inability to stay off the booze, desperate Barry believes his salvation has come in the form of two private bankers, ready to give him the five star treatment he deserves.

Liz and Greg are two tabloid journalists posing as private bankers, determined to get the scoop of the year, no matter what lengths they have to go to. When Barry opens up to them, his revelations are the least of the surprises in this dark game of power and deception.

*Dumb Show* is a fierce satire on the relationship between the morality of the press and the ethics of celebrity culture. This black comedy is even more relevant today than it was when written in 2004.

Tickets: £5.00 - £18.50



Audio Described performance:  
28 June 2012 at 7.30pm



Sign Interpreted performance:  
21 June 2012 at 7.30pm



Box Office: 0161 624 2829  
[www.coliseum.org.uk](http://www.coliseum.org.uk)



This production will take place at the Grange Arts Centre.  
For more information go to page 21.

of Experience!

# DUMB SHOW

BY JOE PENHALL

DIRECTED BY KEVIN SHAW



## Oldham Coliseum Theatre @ Alexandra Park

An Oldham Coliseum Theatre Production

12 – 22 July 2012

---

### In fair Oldham, where we lay our scene

This summer Oldham Coliseum moves into Alexandra Park for the company's first ever open air theatre production, the World Première of *Star-Cross'd* – Oldham's very own take on *Romeo and Juliet*.

Robbie O, a typical tracksuit wearing Oldham lad, and Judy, a beautiful Bengali student from Oldham College, come from very different backgrounds and live very different lives. When the star-crossed pair meet and fall in love, their relationship is faced with conflict from all sides.

The traditional version of *Romeo and Juliet* ends in inevitable tragedy - but in Oldham we do things differently. Prepare for a few surprises thanks to the Oldham Theatre Workshop, a variety of dance companies, a brass band, a sprinkle of magic and a whole lotta love.

Don't miss this summer extravaganza which celebrates the town's kaleidoscope of cultures and unites diverse groups and organisations under one umbrella, although we hope that brollies won't be needed in the predicted blazing heat of July 2012.

*Star-Cross'd* is performed promenade style, moving around Oldham's beautiful park. So pack a picnic, some comfortable shoes and a plastic mac (just in case), and join us for what promises to be the outdoor event of the year.

Tickets: £5.00 - £18.50



Audio Described performance:  
19 July 2012 at 7.30pm



Sign Interpreted performance:  
19 July 2012 at 7.30pm



Box Office: 0161 624 2829  
[www.coliseum.org.uk](http://www.coliseum.org.uk)



This production will take place at Alexandra Park.  
For more information go to page 23.



**WORLD PREMIERE**

# STAR-CROSS'D

**By Ian Kershaw**

**Directed by Kevin Shaw**

An Oldham Coliseum Theatre Production

## 24 November 2012 – 12 January 2013

Join us at Oldham Coliseum Theatre next Christmas for *Cinderella*, the most magical and enchanting pantomime of them all.

Poor old Cinders is a lowly housemaid with a wicked stepmother and two very ugly sisters. When the Prince of the land announces that he is holding a huge party to find his bride, Cinderella knows she won't be able to go. But along comes her Fairy Godmother, and with a wave of her wand and a little help from Buttons, Cinderella shall go to the ball.

*Cinderella*, one of the greatest fairy tales of all time, will be given the usual Coliseum treatment of stunning costumes, shimmering scenery and magical music. This is one festive bash you do not want to be late for. The Coliseum is famed all over the North West for its pantomimes, with our 2010 production of *Sleeping Beauty* winning a Manchester Evening News Theatre Award for Best Family Show:

*"The best traditional panto you are likely to see in the region."* – Oldham Chronicle

### Non-peak Performance Prices

Full Price: £15.50  
Child (under 16): £11.50  
Concessions: £13.20  
Family Ticket (2 adults, 2 children): £48.00  
Group Rates (15 or more): £13.50  
Concessionary Groups: £11.00  
School Rate for Daytime Off-peak Performances: £6.75

### Peak Performance Prices

Full Price: £18.00  
Child (under 16): £13.50  
Concessions: £15.00  
Family Ticket (2 adults, 2 children): £55.00  
Group Rates (15 or more): £15.50  
Concessionary Groups: £13.00



### NOVEMBER

|              |         |        |
|--------------|---------|--------|
| SATURDAY 24  | 2:15PM  | 7:30PM |
| MONDAY 26    | 10:15AM | 2:15PM |
| TUESDAY 27   | 10:15AM | 2:15PM |
| WEDNESDAY 28 | 10:15AM | 2:15PM |
| THURSDAY 29  | 10:15AM | 2:15PM |
| FRIDAY 30    | 10:15AM | 7:30PM |

### DECEMBER

|              |         |        |
|--------------|---------|--------|
| SATURDAY 1   | 2:15PM  | 7:30PM |
| MONDAY 3     | 10:15AM | 2:15PM |
| TUESDAY 4    | 10:15AM | 2:15PM |
| WEDNESDAY 5  | 10:15AM | 2:15PM |
| THURSDAY 6   | 10:15AM | 2:15PM |
| FRIDAY 7     | 10:15AM | 7:30PM |
| SATURDAY 8   | 2:15PM  | 7:30PM |
| MONDAY 10    | 10:15AM | 2:15PM |
| TUESDAY 11   | 10:15AM | 2:15PM |
| WEDNESDAY 12 | 10:15AM | 2:15PM |
| THURSDAY 13  | 10:15AM | 2:15PM |
| FRIDAY 14    | 10:15AM | 7:30PM |
| SATURDAY 15  | 2:15PM  | 7:30PM |
| MONDAY 17    | 2:15PM  | 7:30PM |
| TUESDAY 18   | 2:15PM  | 7:30PM |
| WEDNESDAY 19 | 2:15PM  | 7:30PM |
| THURSDAY 20  | 2:15PM  | 7:30PM |
| FRIDAY 21    | 2:15PM  | 7:30PM |
| SATURDAY 22  | 2:15PM  | 7:30PM |
| MONDAY 24    | 2:15PM  | 7:30PM |


### CHRISTMAS DAY

|              |        |        |
|--------------|--------|--------|
| WEDNESDAY 26 | 2:15PM | 7:30PM |
| THURSDAY 27  | 2:15PM | 7:30PM |
| FRIDAY 28    | 2:15PM | 7:30PM |
| SATURDAY 29  | 2:15PM | 7:30PM |
| MONDAY 31    | 2:15PM | 7:30PM |

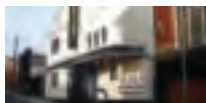
### JANUARY

|             |        |        |
|-------------|--------|--------|
| WEDNESDAY 2 | 2:15PM | 7:30PM |
| THURSDAY 3  | 2:15PM | 7:30PM |
| FRIDAY 4    | 2:15PM | 7:30PM |
| SATURDAY 5  | 2:15PM | 7:30PM |
| MONDAY 7    |        | 7:30PM |
| TUESDAY 8   |        | 7:30PM |
| WEDNESDAY 9 | 2:15PM | 7:30PM |
| THURSDAY 10 |        | 7:30PM |
| FRIDAY 11   |        | 7:30PM |
| SATURDAY 12 | 2:15PM | 7:30PM |

 Audio Described performance:  
6 December 2012 at 2.15pm

 Sign Interpreted performance:  
19 December 2012 at 7.30pm

Box Office: 0161 624 2829  
[www.coliseum.org.uk](http://www.coliseum.org.uk)

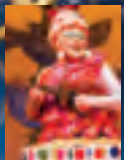


This production will take place at the newly refurbished Oldham Coliseum Theatre.

A TRADITIONAL PANTOMIME

# Cinderella

WRITTEN BY FINE TIME FONTAYNE AND KEVIN SHAW  
DIRECTED BY KEVIN SHAW



STARRING FINE TIME FONTAYNE



# more than a theatre experience

## GET ACTIVE

*Out and About* is the perfect opportunity to get involved with the Coliseum's Education & Outreach activities. Our regular groups for **children (Drama Daze and Play In A Week)**, **young people (Theatre and DigiLABs, Pathways and The Steering Group)** and **adults (ActingLAB, ReadIT and Full Circle)** will be taking place at Oldham Central Library and Oldham Theatre Workshop. Full details of the groups' programmes and where they will be meeting are available under the Get Involved tab at [www.coliseum.org.uk](http://www.coliseum.org.uk) or call 0161 785 7007.

## GET CLOSER

During *Out and About* the Coliseum is delighted to be working in partnership with Oldham Libraries. Together the Coliseum and Central Library are launching two new exciting activities: **Play Makers**, an interactive monthly drop-in session for families; and **In Conversation**, a series of theatre related talks hosted by Kevin Shaw, the Coliseum's Artistic Director. Further information about both events can be obtained at [www.oldham.gov.uk/libraries](http://www.oldham.gov.uk/libraries).

## GET INVOLVED

For *Alfie, The Hound of the Baskervilles* and *Dumb Show*, the Education & Outreach department is providing a series of online resources including interviews with actors and directors and a free bookable 30 minute pre-show talk for groups of 20 plus (subject to availability). On Saturday 28 April we are holding a full day **Discovery Master Class** for *Alfie*. For further details about any of these and information about our bespoke **Making Theatre** workshops please speak to a member of the Education & Outreach team on 0161 785 7007 or email [education@coliseum.org.uk](mailto:education@coliseum.org.uk).



# and participate

## GET CONNECTED

Outreach work at the Coliseum is an opportunity for groups to engage with the theatre. Offering **Arts Award** programmes for young people and theatre related training for adults, each project is bespoke and designed to meet your organisation's objectives in a fun learning environment. Using drama as a tool to break down barriers and contribute to community cohesion, projects embed the development of transferable skills and can explore a variety of themes. For more information contact Carly Henderson, Outreach Officer, on 0161 785 7008.

## CHILDREN'S SHAKESPEARE FESTIVAL

Following the success of the inaugural primary school CSF at the Coliseum Theatre we are delighted to be working again with North West Drama to produce the 2nd Oldham and Rochdale Children's Shakespeare Festival. This will take place at the Middleton Arena on Wednesday 4 July 2012 and will showcase the work of eight local primary schools.

## WORDSMITH12

### New Writing Festival 4 – 12 May 2012

Join us as we showcase new writing from across the region and offer opportunities to learn more about the sector and develop contacts and skills. Taking place at sites across Oldham we will be presenting, with North West Playwrights, a series of masterclasses and rehearsed readings from new and emerging writers and theatre companies.

To discover more about new writing at the Coliseum and to receive information about **Wordsmith12** please email us at [education@coliseum.org.uk](mailto:education@coliseum.org.uk).

Oldham Coliseum Theatre @ Earl Mill

An Oldham Coliseum Theatre Education & Outreach Production, in association with Earl Arts Centre, Oldham College and University Campus Oldham

27 – 28 April 2012

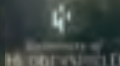
# tunnel visions

Tunnels hold secrets, deep underground passages left vacant, still, dark, damp and desolate. *Tunnel Visions* is an exploration of the mystery and intrigue of a forbidden place. Using new technologies and new writing to transform an undeveloped mill space, this piece of experimental theatre will submerge the audience in a total theatre experience, delving into what really lies beneath.

*Tunnel Visions* will be designed and performed by the Coliseum's TheatreLAB and DigiLAB groups working alongside writer Rob Johnston, leading digital arts company IMITATING THE DOG and the Coliseum's Creative Development Officer, Paul Adams. This large scale performance installation will draw particular stimulus from the Lydgate Tunnel, the disused railway tunnel that ran to Oldham on the Manchester/Huddersfield line before closing in 1963.

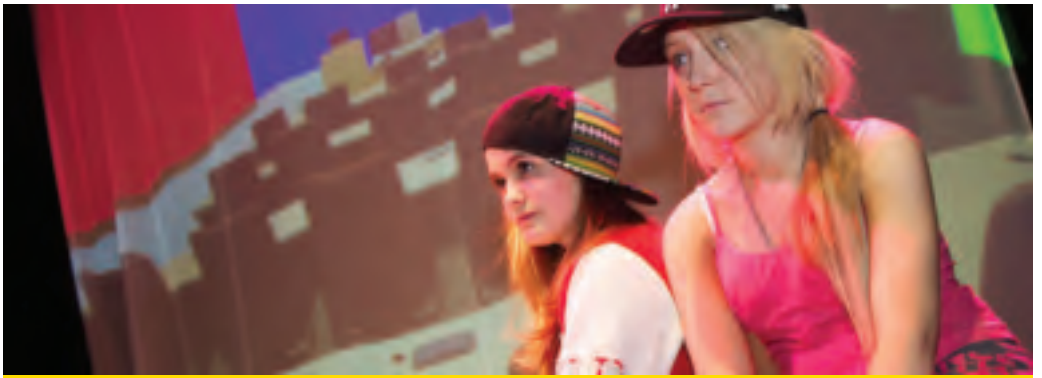
Tickets: £3.00

Box Office: 0161 624 2829  
[www.coliseum.org.uk](http://www.coliseum.org.uk)



LOTTERY FUNDED

This production will take place at  
Earl Mill, Dowry Street, Oldham OL8 2PF



Oldham Coliseum Theatre, in association with Oldham College presents

# YouLEAD

## Pathways Youth Opportunity Conference

**18 July 2012**

---

Oldham Coliseum Theatre has been running Theatre Pathways over the last two years under the Big Lottery Fund. It is now in its third year of providing arts career advice and mentorship for young people aged 14-25. As part of the third year the Coliseum will be supporting their young participants to stage an evening of careers advice centered on Pathways into the Creative Arts.

The event's core purpose is to help young people in Oldham and the surrounding areas to learn how to engage, work and create a pathway in the arts and also look further into what opportunities Oldham has to offer for young people.

If you would like to be involved as a key speaker or would just like to attend, please get in touch with the Coliseum's Creative Development Officer, Paul Adams on 0161 785 7015, or email [pauladams@coliseum.org.uk](mailto:pauladams@coliseum.org.uk).

This is a night for young people led by young people.

Venue: Grange Arts Centre

Time: Open Networking 5:00pm-6:00pm

Event: 6:00pm-8:00pm

Price: FREE



Box Office: 0161 624 2829  
[www.coliseum.org.uk](http://www.coliseum.org.uk)



This production will take place at the Grange Arts Centre.  
For more information go to page 21.



Oldham Coliseum Theatre @ Oldham Central Library

A Thingumajig Production

Thursday 7 June 2012 at 11:00am and 1:00pm

# Hullaba Lulu

An eccentric couple travel their strange monochrome world in a quirky land-boat, until their lives are turned upside down by a new arrival - the adorable and colourful Lulu. In her ever-changing forms, Lulu teaches the couple all about love, play and eventually, how to say goodbye. Entertaining, hilarious and poignant, the show features exquisite puppetry, live music and songs.

Brought to you by West Yorkshire's Thingumajig Theatre who are fast becoming one of the UK's most respected puppet companies. Their return to Oldham is eagerly anticipated. The Company's distinctive visual style is acclaimed by audiences both in this country and abroad. *Hullaba Lulu* is sure to captivate every audience with its engaging characters and spell-binding story.

Running time: 50 minutes

Suitable for all ages 5 +

[www.thingumajig.info](http://www.thingumajig.info)

Tickets: Adults: £6.00

Children: £4.00

Box Office: 0161 624 2829

[www.coliseum.org.uk](http://www.coliseum.org.uk)



This production will take place at Oldham Central Library,  
Gallery Oldham, Greaves Street OL1 1AL



# The Coliseum Out and About



GRANGE ARTS

## Where? **The Grange Arts Centre, Oldham**

**What?** *Move Over Moriarty*, performed in a traditional theatre style layout.

*Alfie* and *Dumb Show*, performed in the theatre-in-the-round configuration in an intimate atmosphere where you are never more than seven rows away from the action.

The Grange Arts Centre is a comfortable purpose-built theatre with excellent sightlines.

## Food and drink

The Grange Arts Centre has a fully licensed bar. Interval drinks can be pre-ordered.

## Access

The Grange Arts Centre is accessible by wheelchair with a free seat for an able bodied adult. Please state that a wheelchair space is needed when you book your tickets. It also has an accessible bar and adapted toilets. If you have any other special requirements, please do not hesitate to discuss your needs with our staff, either whilst booking tickets or upon your visit.

## How to find us

The Grange Arts Centre, Rochdale Road, Oldham OL3 6EA

## By car

### Free parking

The Oldham Academy North is providing free car parking for evening shows. The Academy is located next to the Grange Arts Centre off Rochdale Road.



For further information about Oldham Academy North go to [www.theoldhamacademynorth.com](http://www.theoldhamacademynorth.com).

### Pay and display

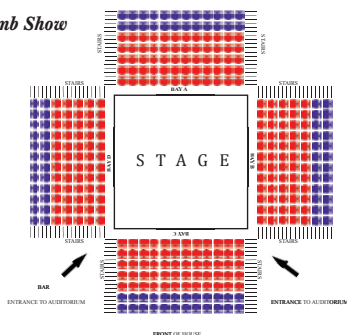
A pay and display car park can be found at the Civic Centre just across the road from the Grange.

## By bus

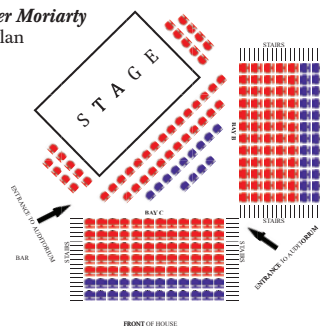
The Grange Arts Centre is a three minute walk from Oldham Bus Station down St Mary's Way and across Rochdale Road.

Tickets for all shows can be booked at the Oldham Coliseum Box Office, see page 24 for full details.

*Alfie and Dumb Show*  
Seating Plan



*Move Over Moriarty*  
Seating Plan





# The Coliseum Out and About



**Where?** Lawrence Batley Theatre, Huddersfield

**What?** *The Hound of the Baskervilles*

## Food and drink

The Lawrence Batley Theatre has a fully licensed bar. Interval drinks can be pre-ordered.

## Access

There are a limited number of wheelchair seats available at the Lawrence Batley Theatre, with a free seat for an accompanying able bodied adult. There is also an accessible toilet. If you require a wheelchair position, please contact the Lawrence Batley Theatre on 01484 430 528. If you have any other special requirements, please contact the Lawrence Batley Theatre, who will be happy to accommodate you.

## How to find us

Lawrence Batley Theatre, Queen's Square, Queen Street, Huddersfield HD1 2SP

## By car

Signage on the Ring Road will lead you to the Market Hall multi-story car park on Alfred Street. There are a small number of parking spaces for disabled badge holders on Queen Street. There is a drop off area on Queen Street which can be accessed from the anti-clockwise carriageway on the Ring Road. Follow the signs for the theatre drop off point, rather than the signs towards the car park. Maps for the Lawrence Batley Theatre are available at the Coliseum Box Office.

## By train and bus

Huddersfield railway and bus stations are approximately a 10 minute walk from the theatre.

## By coach



Sit back and relax as Oldham Coliseum Theatre is delighted to be working with Swans Travel to make sure you don't miss a single show while we're *Out and About*.

Swans Travel will be providing luxury coach travel from the centre of Oldham to the Lawrence Batley Theatre with a pick up at Saddleworth Museum, Uppermill en route.

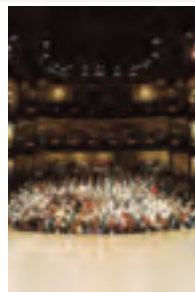
Coaches will leave Bradshaw Street at 6.15pm for evening performances on Monday 12, Tuesday 13, Thursday 15, Friday 16 and Saturday 17 March and at 1.00pm for the matinée performance on Saturday 17 March.

Coach travel is bookable in advance and available at the bargain price of £3.00 for season ticket holders and £5.00 for non-season ticket holders.

## Chronicle Reader Events

The Oldham Chronicle will be running a special coach trip for the performance on Wednesday 14 March which includes a pre theatre meal. For more information please contact Chronicle Promotions on 0161 622 2130.

Tickets for *The Hound of the Baskervilles* can be booked through the Coliseum Box Office, please see page 24 for more details.



# The Coliseum Out and About



**Where?** **Alexandra Park, Oldham**

**What?** The World Première of *Star-Cross'd*

During this promenade performance the audience will explore the park as the action unfolds. There are no formal seating arrangements so bring a brolley, a blanket or a folding chair.

## Food and drink

A selection of snacks and drinks will be available - but why not pack a picnic?

## Access

This performance is promenade, however the play trail is no longer than three quarters of a mile long and is wheelchair accessible. For further information please call the Box Office on 0161 624 2829.

## How to find us

Alexandra Park, Oldham OL8 2BN

Alexandra Park is located in the South East of Oldham, bordered by Alexandra Road, Park Road/Queen's Road and King's Road.

## By car

Three car parks are available on Park Road (at the junction with King's Road), King's Road and Alexandra Road.

## By bus

Buses 408, 425 and 145 stop near Alexandra Park. For up to date bus information and times call Transport for Greater Manchester on 0871 200 2233.



# New Box Office for Oldham Coliseum

While we're *Out and About* in 2012, we've moved to a new Box Office in the centre of Oldham. You can find us at Unit 12 Albion Street, at the front of the Tommyfield Market building (formerly the Tourist Information Office). So drop in and see us to book tickets and also keep up to date with the latest developments during this exciting year.

## How to book

**In person:** Unit 12, Albion Street, Oldham, Opening Times: Monday – Saturday 9.30am – 5.00pm

**Online:** [www.coliseum.org.uk](http://www.coliseum.org.uk) NO ONLINE BOOKING FEE

**By phone:** 0161 624 2829

**By email:** Sign up to our weekly e-newsletter at [www.coliseum.org.uk](http://www.coliseum.org.uk)

**At the venue:** Tickets can be bought and collected at each of our new venues 90 minutes before each performance.

## Great value at the Coliseum - Price Rollback

Oldham Coliseum continues to offer top quality theatre at affordable prices. As well as not charging an online booking fee we've also rolled back our ticket prices. Tickets for this season can be bought at 2009 prices.



See below for more details:

|  | Saturday Evenings           | Weekday Evenings            | Matinees                   | Preview Nights |
|--|-----------------------------|-----------------------------|----------------------------|----------------|
| Band A                                     | £18.50 Full<br>£15.50 Concs | £16.60 Full<br>£13.60 Concs | £11.50 Full<br>£8.50 Concs | £10.00         |
| Band B                                     | £16.00 Full<br>£13.00 Concs | £14.00 Full<br>£11.00 Concs | £11.50 Full<br>£8.50 Concs | £10.00         |
| Groups of 10+<br>One free organiser ticket | £3.00 off Full              | £3.00 off Full              | N/A                        | £10.00         |
| Under 26                                   | £5.00                       | £5.00                       | £5.00                      | £5.00          |
| Schools and Colleges                       | N/A                         | £5.00                       | £5.00                      | N/A            |
| Standby Tickets                            | N/A                         | £10.00                      | £10.00                     | N/A            |
| Lawrence Batley<br>Band A                  | £16.00 Full<br>£14.00 Concs | £16.00 Full<br>£14.00 Concs | £12.00                     | N/A            |
| Lawrence Batley<br>Band B                  | £14.00 Full<br>£12.00 Concs | £14.00 Full<br>£12.00 Concs | £12.00                     | N/A            |

# season ticket

Any day, anywhere, no restrictions, just massive savings with our season ticket; rolled back to 2009 prices!



This season we are offering our customers the chance to see either three or four shows as part of our season ticket, at greatly reduced costs:

## Three Show Season Ticket

Full Price Three Show Season Ticket: £36.00

Concession Three Show Season Ticket: £30.00

Matinee Three Show Season Ticket: £20.00

**Saving you up to £27.00.**

Choose three shows between *The Hound of the Baskervilles*, *Alfie*, *Dumb Show* and *Star-Cross'd*.



## Four Show Season Ticket

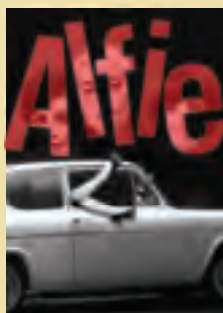
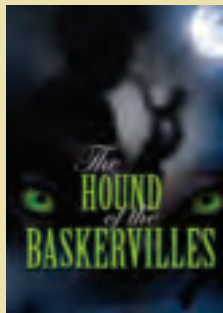
Full Price Four Show Season Ticket: £45.00

Concession Four Show Season Ticket: £37.00

Matinee Four Show Season Ticket: £25.00

**Saving you up to a massive £40.00**

Plus benefit from priority booking, free ticket transfers, and reduced price coach travel to the Lawrence Batley Theatre.



You can now pay for your season ticket by Direct Debit, and spread the cost over three monthly payments. Contact the Box Office for more details.



# under 26? got a fiver?

Until August 2012, if you are under 26 you can get tickets for the following productions for just £5.

Simple as that.

Productions on offer this season include: *Move Over Moriarty*, *Alfie*, *Dumb Show* and *Star-Cross'd*

The Lawrence Batley Theatre operates its own concessionary rate for under 26s. If you are 26 or under you can see *The Hound of the Baskervilles* for just £6.



## give as you live™

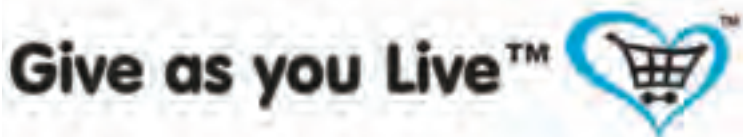
Do you shop online? Would you like to help the Coliseum raise some money at no cost to yourself?

If so, [www.giveasyoulive.com](http://www.giveasyoulive.com) is the perfect way to do this.

Thousands of stores are signed up to this scheme - Boots, itunes, Comet, Dixons, John Lewis, Marks & Spencer and Sainsbury's, to name a few - and once you have signed up to Give as you Live, every time you make a purchase through

one of these online stores, they will give a percentage of your spend to your selected charity, which we hope will be Oldham Coliseum Theatre. This is at no extra cost to you but will be of huge benefit to us.

Go to [www.giveasyoulive.com](http://www.giveasyoulive.com) for more information and to sign up to the scheme.



# 125th anniversary appeal

In July 2011, the Coliseum launched its 125th Anniversary Appeal, asking our loyal patrons to make a donation to the Coliseum so that we can reseat our auditorium as part of our 2012 refurbishment project.

The new seating will:

- Be more comfortable;
- Give better leg room;
- Improve sightlines to the stage;
- Lead to fewer seats with a restricted view;
- Improve the general ambience of the theatre.

The appeal has been hugely successful so far, as thanks to the generosity of our audience we have already raised a third of the money needed, but we still have a long way to go.



## Sign Up!

The Coliseum is a registered charity and we are asking you to make a donation to the theatre to support us in our refurbishment plans.

Any amount, no matter how large or small, will be of huge benefit to us, and will really help to improve our theatre.

A donation of £250 is the equivalent to the cost of one of the new seats in the auditorium. If a donation is made of this amount, we will recognise your support by inscribing a plaque placed on one of the new seats with a message of your choice.

This is your opportunity to support the theatre during an exciting phase of the refurbishment and celebrate 125 years of the Coliseum – for further information, to make a donation, or to set up Direct Debit payments, contact our Finance Manager Peter Wakefield on 0161 785 7004.



The Coliseum would like to thank those people who have already generously given a donation as part of this appeal.

# diary

Box Office: 0161 624 2829  
www.coliseum.org.uk

## MARCH

|              |                               |                         |               |      |
|--------------|-------------------------------|-------------------------|---------------|------|
| MONDAY 12    | THE HOUND OF THE BASKERVILLES | LAWRENCE BATLEY THEATRE | 7:30PM        | C    |
| TUESDAY 13   | THE HOUND OF THE BASKERVILLES | LAWRENCE BATLEY THEATRE | 7:30PM        | C PP |
| WEDNESDAY 14 | THE HOUND OF THE BASKERVILLES | LAWRENCE BATLEY THEATRE | 7:30PM        | CO S |
| THURSDAY 15  | THE HOUND OF THE BASKERVILLES | LAWRENCE BATLEY THEATRE | 7:30PM        | C    |
| FRIDAY 16    | THE HOUND OF THE BASKERVILLES | LAWRENCE BATLEY THEATRE | 7:30PM        | C D  |
| SATURDAY 17  | THE HOUND OF THE BASKERVILLES | LAWRENCE BATLEY THEATRE | 2:15PM 7:30PM | C    |

## APRIL

|              |                    |                        |               |     |
|--------------|--------------------|------------------------|---------------|-----|
| TUESDAY 3    | MOVE OVER MORIARTY | THE GRANGE ARTS CENTRE | 7:30PM        |     |
| WEDNESDAY 4  | MOVE OVER MORIARTY | THE GRANGE ARTS CENTRE | 7:30PM        |     |
| THURSDAY 5   | MOVE OVER MORIARTY | THE GRANGE ARTS CENTRE | 7:30PM        |     |
| SATURDAY 7   | MOVE OVER MORIARTY | THE GRANGE ARTS CENTRE | 2:30PM 7:30PM |     |
| WEDNESDAY 11 | ALFIE              | THE GRANGE ARTS CENTRE | 7:30PM        | P   |
| THURSDAY 12  | ALFIE              | THE GRANGE ARTS CENTRE | 7:30PM        | PP  |
| FRIDAY 13    | ALFIE              | THE GRANGE ARTS CENTRE | 7:30PM        |     |
| SATURDAY 14  | ALFIE              | THE GRANGE ARTS CENTRE | 7:30PM        |     |
| TUESDAY 17   | ALFIE              | THE GRANGE ARTS CENTRE | 7:30PM        |     |
| WEDNESDAY 18 | ALFIE              | THE GRANGE ARTS CENTRE | 2:30PM 7:30PM |     |
| THURSDAY 19  | ALFIE              | THE GRANGE ARTS CENTRE | 7:30PM        |     |
| FRIDAY 20    | ALFIE              | THE GRANGE ARTS CENTRE | 7:30PM        |     |
| SATURDAY 21  | ALFIE              | THE GRANGE ARTS CENTRE | 7:30PM        |     |
| TUESDAY 24   | ALFIE              | THE GRANGE ARTS CENTRE | 7:30PM        | D   |
| WEDNESDAY 25 | ALFIE              | THE GRANGE ARTS CENTRE | 7:30PM        |     |
| THURSDAY 26  | ALFIE              | THE GRANGE ARTS CENTRE | 7:30PM        |     |
| FRIDAY 27    | ALFIE              | THE GRANGE ARTS CENTRE | 7:30PM        | S   |
| SATURDAY 28  | TUNNEL VISIONS     | EARL MILL              |               | TBC |
|              | ALFIE              | THE GRANGE ARTS CENTRE | 2:30PM 7:30PM | TBC |
|              | TUNNEL VISIONS     | EARL MILL              |               | TBC |

## MAY

|             |             |         |  |     |
|-------------|-------------|---------|--|-----|
| 04 - 12 MAY | WORDSMITH12 | VARIOUS |  | TBC |
|-------------|-------------|---------|--|-----|

## JUNE

|              |               |                        |                |    |
|--------------|---------------|------------------------|----------------|----|
| THURSDAY 7   | HULLABA LULU  | OLDHAM CENTRAL LIBRARY | 11.00AM 1.00PM |    |
| TUESDAY 12   | DUMB SHOW     | THE GRANGE ARTS CENTRE | 7:30PM         | P  |
| WEDNESDAY 13 | DUMB SHOW     | THE GRANGE ARTS CENTRE | 7:30PM         | PP |
| THURSDAY 14  | DUMB SHOW     | THE GRANGE ARTS CENTRE | 7:30PM         |    |
| FRIDAY 15    | DUMB SHOW     | THE GRANGE ARTS CENTRE | 7:30PM         |    |
| SATURDAY 16  | DUMB SHOW     | THE GRANGE ARTS CENTRE | 2:30PM 7:30PM  |    |
| MONDAY 18    | SEASON LAUNCH | THE GRANGE ARTS CENTRE | 7:30PM         |    |
| TUESDAY 19   | DUMB SHOW     | THE GRANGE ARTS CENTRE | 7:30PM         |    |
| WEDNESDAY 20 | DUMB SHOW     | THE GRANGE ARTS CENTRE | 2:30PM 7:30PM  |    |
| THURSDAY 21  | DUMB SHOW     | THE GRANGE ARTS CENTRE | 7:30PM         | S  |
| FRIDAY 22    | DUMB SHOW     | THE GRANGE ARTS CENTRE | 7:30PM         |    |
| SATURDAY 23  | DUMB SHOW     | THE GRANGE ARTS CENTRE | 7:30PM         |    |
| TUESDAY 26   | DUMB SHOW     | THE GRANGE ARTS CENTRE | 7:30PM         |    |
| WEDNESDAY 27 | DUMB SHOW     | THE GRANGE ARTS CENTRE | 7:30PM         |    |
| THURSDAY 28  | DUMB SHOW     | THE GRANGE ARTS CENTRE | 7:30PM         | D  |
| FRIDAY 29    | DUMB SHOW     | THE GRANGE ARTS CENTRE | 7:30PM         |    |
| SATURDAY 30  | DUMB SHOW     | THE GRANGE ARTS CENTRE | 2:30PM 7:30PM  |    |

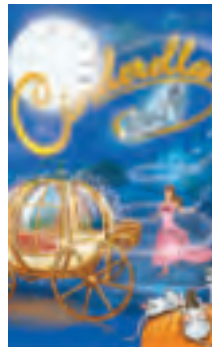
## JULY

|              |                                 |                        |               |     |
|--------------|---------------------------------|------------------------|---------------|-----|
| WEDNESDAY 11 | CHILDREN'S SHAKESPEARE FESTIVAL | MIDDLETON ARENA        | 1:30PM 6:00PM |     |
| THURSDAY 12  | STAR-CROSS'D                    | ALEXANDRA PARK         | 7:30PM        | P   |
| FRIDAY 13    | STAR-CROSS'D                    | ALEXANDRA PARK         | 7:30PM        | PP  |
| SATURDAY 14  | STAR-CROSS'D                    | ALEXANDRA PARK         | 2:30PM 7:30PM |     |
| SUNDAY 15    | STAR-CROSS'D                    | ALEXANDRA PARK         | 7:30PM        |     |
| WEDNESDAY 18 | STAR-CROSS'D                    | ALEXANDRA PARK         | 7:30PM        |     |
|              | YOU LEAD                        | THE GRANGE ARTS CENTRE | 5.00PM        |     |
| THURSDAY 19  | STAR-CROSS'D                    | ALEXANDRA PARK         | 7:30PM        | D S |
| FRIDAY 20    | STAR-CROSS'D                    | ALEXANDRA PARK         | 7:30PM        |     |
| SATURDAY 21  | STAR-CROSS'D                    | ALEXANDRA PARK         | 2:30PM 7:30PM |     |
| SUNDAY 22    | STAR-CROSS'D                    | ALEXANDRA PARK         | 2:30PM 7:30PM |     |

P - Preview Night  
PP - Press Night  
D - Audio Described Performance

S - BSL Sign Interpreted Performance  
C - Coach Travel Available  
CO - Oldham Chronicle Offer

Oldham Coliseum reserves the right to offer selected discounts at its discretion.  
All details in the brochure are correct at the time of going to press.  
For information on running times, use of smoke, strobe lighting etc. call the Box Office.



24 November 2012  
- 12 January 2013  
For full diary see page 14



Oldham Coliseum Theatre



Sponsored by



The Coliseum gratefully  
acknowledges funding from:



Oldham  
Council

